

in the previous regular session. It has been four months in the making. It was modified just hours before Wednesday night's work session.

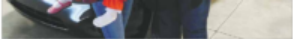
It was also motivated by the board members, many of whom said they had little time to review the revised plan.

The Strategic Plan is aimed at seeking community engagement. Its focus then are to increase student achievement, creating a positive culture and eliminating disparities.

It calls for the community to join forces with the school board to increase literacy rates, promote early graduation and minimize the effects of poverty, mental health and addiction of the county's nearly 60,000 students.

The Strategic Plan has been a long time coming and was the one item Wednesday night that was addressed during the public forum.

Knox County resident Lance McCull speaks. He is one of several community members at multiple public meetings to improve education in the school district.



Kimberly Longoria with her daughters, Kaitlin and Abby with the car donated to them by Johnson State and King Collision.

King Collision donates car to Powell teacher

By Mike Steady
mstead@knoxnews.com

For the third year King Collision turned its profits into a charitable gift for a very worthy person. Thursday the company, at 2707 Old Columbia Road, donated a 2008 Nissan Quest to "read elementary fifth grade teacher Kimberly Longoria. She's a mother of two girls, one of whom suffers from Down Syndrome and learned Patrick Day's history and Abby Long of King Collision sat down with

"When Ed King learned about the program he started the process," McCoy said. The company said that if a car is damaged in a wreck at 75% of the vehicle's value it is "totaled." The totaled car is then rebuilt and gifted to a school system. Since 2006 the company has donated this year's car which was damaged by King Collision where a total would have begun.

"We get parts donated from local businesses and vendors and our employees donate their



Representative of several Knox County companies and